



THREE PHASE SOLID STATE RELAY S3PDJ-4-.., S3PDJ-6-.. Series S3PA-4-.., S3PA-6-.. Series

Features

- Rated O/P current 10, 16, 25, 40 Amps (Casing A)
50, 75, 90 Amps(Casing B)
- Control Voltage 4-32 VDC or 90- 280 VAC
- Optically isolated
- Zero Voltage turn-on, Zero Current Turn-Off
- Built-in snubber, Input LED Indication
- 4000 Volt Isolation
- Faster switching response
- Requires minimum actuation power
- IP 20 touch safe cover

J: Zero voltage turn-on for resistive loads

K: Random turn-on for inductive loads



Casing A (10 to 40 Amps)



Casing B (50 to 90 Amps)



SATRONIX Three phase series of solid state relays switch three phase motors, heaters or transformer loads. SCR Output for heavy industrial loads. Direct Copper Bonding substrates used for rating above 50 Amps. Load voltage 600 VAC models too available. AC and DC controlled ranges available. Models from 90 – 205 Amps too available

Input Specifications

TYPE	S3PD - 4 - 10/16/ ..	S3PA - 4 - 10/16/ ..
Control Voltage range	4 - 32 VDC	90 - 280 VAC
Control current range	<=25 mA	<10 mA
Pick-up voltage	4 VDC	90 VAC
Drop-out voltage	1 VDC	10 VAC
Input resistance	Current Regulation	Current Regulation

- 17 - 80 VAC Input control voltage available on request

Output Specifications

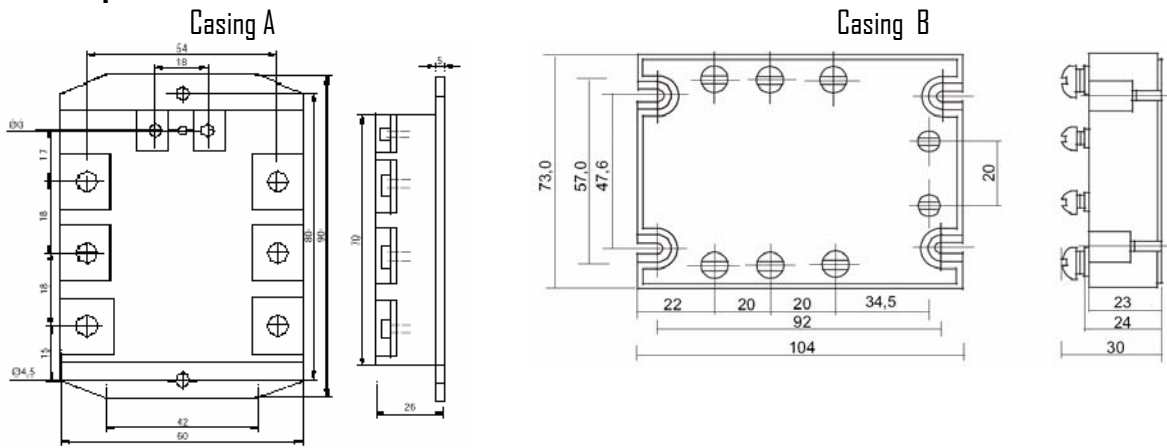
TYPE	S3PDJ/S3PA-4-10	S3PDJ/S3PA-4-16	S3PDJ/S3PA-4-25	S3PDJ/S3PA-4-40	S3PDJ/S3PA-4-50	S3PDJ/S3PA-4-75	S3PDJ/S3PA-4-90
CASING	A / B	A / B	A / B	A / B	B	B	B
Current range with proper Heatsink (IT)	10 A	16 A	25 A	40 A	50 A	75 A	90 A
Repetitive peak off-state voltage (VDRM) Vpk	800-1200 Vpk	800-1200 Vpk	800-1200 Vpk	800-1200 Vpk	800-1200 Vpk 800-1600 Vpk	800-1200 Vpk 800-1600 Vpk	800-1200 Vpk 800-1600 Vpk
Voltage Drop @ Rated Current (VTM)	1.6 VACrms	1.6 VACrms	1.6 VACrms	1.85 VACrms	1.85 VACrms	2.0 VACrms	2.0 VACrms
Load Voltage Range	25 - 480 VACrms / 48 - 660 VAC rms						
Surge Current (I) non-Repetitive t= 20msecs. (ITMS)	50 Hz 60 Hz	120 A 126A	160 A 168 A	250 260	400 A 420 A	597 A 625 A	1150 A 1185 A
Off-state leakage current @ (IDRM)	<10 mA						
Turn-on (max.) / pick-up	DC input models: 10 msecs			AC input models: 20msecs			
Turn-off (max.) / drop-out 50Hz	DC input models: 10 msecs			AC input models: 30msecs			
Holding current (IH)	50 mA	100mA	150mA	250mA	250mA	400mA	400mA
Dv/Dt @ Voltage	200 V/ μs	200 V/ μs	500 V/ μs	1000 V/ μs	1000 V/ μs	1000 V/ μs	1000 V/ μs
I ² T Fusing (10 ms.)	72 A ² S	130 A ² S	500 A ² S	600 A ² S	1250 A ² S	5000 A ² S	7200 A ² S

Note: Turn-on time for Random series - 0.02msec for DC control input
For Load voltage Range 48-660 VAC Type: S3PDJ-6-.. above 50 amps

General Specifications

Frequency Range	47 - 70 Hz
Dielectric Strength (Input to Output to Base)	4000 Vrms
Weight	Approx. 300 g
Storage Temp.	- 40 °C to 100 °C
Junction Temp.	100 °C

Mechanical specifications

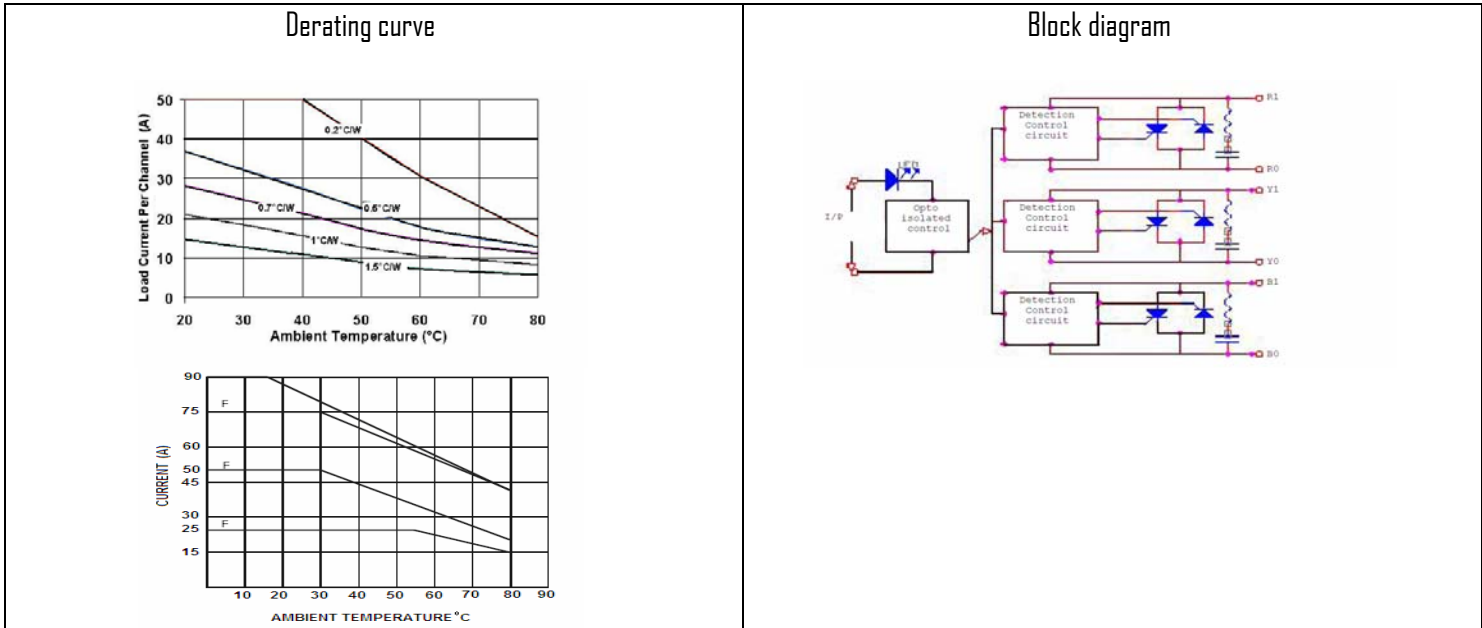


Note: casing A for below 40A SSR

Note: casing B above 50A SSR

Thermal Derating curve

Block diagram



SATRONIX (INDIA) Pvt.Ltd.

OFFICE: 412, Laxmi Plaza, Laxmi Indl. Est., Link Rd, Andheri (W), Mumbai- 400 053,INDIA
 Works:Unit No. 1,Electronic Sadan 1 & Unit No.12, Electronic Sadan 3,Bhosari MIDC, PUNE –411026,INDIA

Tele:

91 22 26325242/ 9820143488 91(020) 27122758 FAX: 91 22 26325242 91 20 27129518Email:

sales@satronixindia.com

satronix@bom3.vsnl.net.in